



# Edge-Computing Product Roadmap

Q1, 2026

*Tina Tseng*     *Account Manager, IEI*



# Industrial and Embedded Motherboard

5G

# ATX Motherboard



## IMBA Series

MP

Developing

Planning

### IMBA-ARL-W880



- Intel® Core™ Ultra processors (Series 2)(Arrow Lake-S), up to 125W
- 2x DP + HDMI + USB4
- 4x DDR5-5600 UDIMM , up to 192GB
- PCIe: 1x Gen5 x16 + 4x Gen4 x4 + 2x Gen4 x1 slots
- 2x M-key + 1x B-key

### IMBA-BTL-Q670



- Intel® Core™ processors (Series 2) (Bartlett Lake-S), up to 125W
- DP + HDMI + iDPM
- 4x DDR5-4400 UDIMM, up to 192GB
- PCIe: Gen5 x16 + 4x Gen4 x4 + 2x Gen4 x1
- M.2: 2x M-key + 1x B-key
- IPMI: iRIS module
- TPM + Audio

### IMBA-V2-W980

- Intel® Core™ Ultra Processors (Nova Lake-S), up to 150W
- DP + HDMI + USB4 + iDPM
- 4x DDR5-5600 UDIMM, up to 256GB
- PCIe: Gen5 x16 + Gen5 x8 + 2x Gen5 x4 + Gen4 x4 + 2x Gen4 x1
- M.2: 2x M-key

### IMBA-ARL-H810



- Intel® Core™ Ultra processors (Series 2)(Arrow Lake-S), up to 65W
- DP + HDMI + iDPM module
- 2x DDR5-5600 UDIMM, up to 128GB
- PCIe: 1x Gen5 x16 + 1x Gen4 x4 + 2x Gen4 x1 + 2x PCI

### IMBA-ARL-Q870



- Intel® Core™ Ultra processors (Series 2)(Arrow Lake-S), up to 125W
- 2x DP, HDMI, USB4
- 4x DDR5-5600 UDIMM, up to 192GB
- PCIe: 2x Gen5 x8 + 4x Gen4 x4 + 1x Gen4 x1
- 2x M-key

### IMBA-BTL-H610



- Intel® Core™ processors (Series 2) (Bartlett Lake-S), up to 65W
- 2x DDR5-5600 UDIMM, up to 96GB
- DP + HDMI + iDPM
- PCIe: Gen4 x16 + Gen4 x4 + 2x Gen4 x1 + 2x PCI
- TPM + Audio

Q5'25

Q1'26

Q2'26

Q4'26

# Micro ATX Motherboard



## IMB Series

MP

Developing

Planning



### IMB-V3000

- AMD® V3000 Series processors
- 2x DDR5-4800 UDIMM, up to 64GB
- PCIe: 1x Gen4 x16 (x8) + 1x Gen4 x4 + 2x Gen4 x1
- 1x 10GbE LAN
- 1x M.2 M key + 1x B-key (support IPMI module)
- NO Graphics



### IMB-ARL-Q870

- Intel® Core™ Ultra processors (Series 2)(Arrow Lake-S), up to 125W
- 2x DP + HDMI + USB4
- 4x DDR5-5600 UDIMM , up to 192GB
- PCIe: 1x Gen5 x16 + 3x Gen4 x4
- 2x M.2 M-key + 1x B-key (for IPMI module)

### IMB-BTL-H610

- Intel® Core™ processors (Series 2) (Bartlett Lake-S), up to 65W
- 2x DDR5-5600 UDIMM, up to 96GB
- DP + HDMI + iDPM
- PCIe: Gen4 x16 + Gen4 x4 + 2x Gen4 x1
- TPM + Audio



### IMB-MTL / ARL-UH

- Intel® Core™ Ultra Processors (Series 1) (Meteor Lake) (Arrow Lake U/H)
- DP + HDMI + USB4 + iDPM module
- 2x DDR5-5600 SO-DIMM, up to 96GB
- PCIe: 1x Gen5 x16 (x8) + 3x Gen4 x4
- 1x M.2 M-key + 1x B-key (for IPMI module)



### IMB-ARL-H810

- Intel® Core™ Ultra processors (Series 2)(Arrow Lake-S), up to 65W
- DP + HDMI + iDPM module
- 2x DDR5-5600 UDIMM, up to 96GB
- PCIe: Gen5 x16 + Gen4 x4 +2x Gen4 x1
- M.2 M-key

2025

Q1'26

Q2'26

# Mini-ITX Motherboard



## KINO Series



**KINO-ADL-H610**

- 12<sup>th</sup>~14<sup>th</sup> gen. Intel® Core™ i9/i7/i5/i3/Pentium®/Celeron® Processor (up to 65W TDP CPU)
- DP, HDMI, iDPM((eDP/LVDS/VGA module)
- 2 x DDR4 3200 SDRAM Unbuffered DIMMs, up to 64GB
- 2 x LAN
- 1 x PCIe Gen4 x16
- M.2 M key 2242/80, A key 2230
- ATX Power

**KINO-ARL-H810**

- Intel® Core™ Ultra Processors (Series 2) (Arrow Lake S)( up to 65W TDP CPU)
- DP, HDMI, USB4
- 2 x DDR5 5600 SDRAM Unbuffered DIMMs, up to 64GB
- 2 x LAN
- Audio Jack (line-out, mic-in)
- 1 x PCIe Gen4 x16
- M.2 M key 2280, E key 2230
- 12V DC Input

**KINO-BTL-H611**

- Intel® Core™ Ultra Processors (Series 2) (Bartlett Lake S)(up to 65W TDP CPU)
- DP, 2 x HDMI
- 2 x DDR5 5600 SO-DIMM, up to 96GB
- 4 x LAN
- Audio Jack (line-out, mic-in)
- 1 x PCIe Gen4 x16
- M.2 M key 2280, E key 2230
- 20pin TPM Connector
- ATX Power

**KINO-ASL**

- Intel® Amston Lake platform (x7433RE / x7835RE)
- DP, 2 x HDMI
- 1 x DDR5 4800 SO-DIMM, up to 16G
- 2 x LAN (TSN support)
- 1 x PCIe x4 slot (PCIe Gen 3 x1 signal)
- 1 x M.2 A Key 2230
- 1 x M.2 M Key 2242/80
- 12~28V DC

**KINO-RPLH**

- Intel® Core™ Processors (Series 1) (Raptor Lake U Refresh) (i3/i5/i7/Celeron® )
- DP, HDMI, iDPM((eDP/LVDS/VGA module)
- 2 x DDR5 5600 SO-DIMM, up to 96G
- 3 x LAN
- 1 x PCIe Gen3x4 slot
- M.2 E Key 2230, B key 3042, M key 2280
- 12~28V DC

**KINO-BTL-DH610**

- Intel® Core™ Ultra Processors (Series 2) (Bartlett Lake S)(up to 65W TDP CPU)
- DP, HDMI, LVDS
- 2 x DDR5 5600 SO-DIMM, up to 96GB
- 3 x LAN
- Audio Jack (line-out, mic-in)
- 1 x PCIe Gen4 x16
- M.2 M key 2280, E key 2230
- Onboard TPM
- 12~28V DC

**KINO-PTL**

- Intel® Core™ Ultra Processors (Series 3) (Panther Lake H)
- HDMI, 2 x USB4, iDPM((eDP/LVDS/VGA module)
- 2 x DDR5 6400 CSO-DIMM, up to 128GB
- 3 x LAN
- 1 x PCIe Gen5 x4
- M.2 M key, E key, B key
- 12~28V DC

Q1, 2026

Q2, 2026

Q4, 2026



# 3.5" SBC



MP

Developing

Planning

## WAFER Series



### WAFER-MTL

- Intel® Core™ Ultra Processors (Series 1) (Meteor Lake)
- DDR5-5600 SO-DIMM, up to 48GB
- DP + HDMI + iDPM + USB4
- 2x Intel @I226V 2.5GbE
- DC input 12~28V
- M.2: A-key + B-key

### WAFER-RPLH

- Intel® Core™ processors (Series 1) (Raptor Lake U Refresh)
- Onboard LPDDR5 16GB, up to 32GB
- 2x HDMI + 2x DP
- PCIe x4 slot for riser card

### WAFER-PTL

- Intel® Core™ Ultra Processors (Series 3) (Panther Lake-H)
- DDR5-6400 SO-DIMM, up to 64GB
- On board NVMe SSD
- DP + HDMI + USB4 + iDPM module
- Triple Intel @I226V 2.5GbE
- M.2: E-key + B-key



### WAFER-RK3576

- Rockchip RK3576 (4x Cortex-A72 up to 2.3GHz + 4x Cortex-A53 up to 2.2GHz)
- Onboard LPDDR5 8GB
- GPU ARM Mali-G52 MC3
- NPU 6 Tops, supports int4/8/16, FP16/BF16/TF32
- CAN Bus



### WAFER-RK3588-D5

- Rockchip RK3588 (Quad core Cortex A76 + Quad Core A55)
- Onboard LPDDR5 8GB
- GPU ARM Mali-G610 MC4
- NPU 6 Tops, supports int4/8/16, FP16/BF16/TF32
- HDMI + LVDS
- M.2 3052/2280 B-key with SIM slot
- 2x 2.5 GbE LAN

Q1'26

Q2'26

Q4'26



# PICMG 1.3 SBC



MP

Developing

Planning

## PCIe & HPCIE Series



### PCIe-RPL-Q670

- Intel® Core™ i Processor (12<sup>th</sup>/13<sup>th</sup>/14<sup>th</sup>), up to 65W
- 4x DDR5 5200 UDIMM, up to 192GB
- DP + HDMI
- M.2: M-key 2242/80
- 1x PCIe x16 , 4x PCIe x1 & 4x PCI signal via golden finger



### PCIe-AM5

- AMD® RYZEN™ 7000 series processor
- DP + HDMI
- 2x DDR5-5200 UDIMM up to 96GB
- 1x M.2 M-key 2280
- 1x PCIe x16 , 4x PCIe x1 & 4x PCI signal via golden finger

### PCIe-ARL-Q870

- Intel® Core™ Ultra Processors (Series 2) (Arrow Lake S), up to 65W
- 2x DDR5-5600 UDIMM, up to 192GB
- DP + HDMI
- M.2: M-key (2280)
- 1x PCIe x16 , 4x PCIe x1 & 4x PCI signal via golden finger



### HPCIE-RPL-Q670

- Intel® Core™ i Processor (12<sup>th</sup>/13<sup>th</sup>/14<sup>th</sup>), up to 65W
- DP + HDMI
- 2x DDR5 5200 SO-DIMM, up to 96GB
- M.2: M-key 2242
- 1x PCIe x16 & 4x PCIe x1 signal via golden finger

### HPCIE-ARL-Q870

- Intel® Core™ Ultra Processors (Series 2) (Arrow Lake S), up to 65W
- 2x DDR5-6400 SO-DIMM, up to 96GB
- DP + HDMI
- M.2: M-key (2280)
- 1x PCIe x16 , 4x PCIe x1 & 4x PCI signal via golden finger

2024

Q4'26

# Peripheral - Interface Card



MP

Developing

Planning

Display/Audio

## iDPM-HDM

- eDP to HDMI Output
- Resolution support up to HDMI1.4b 4K@30Hz

## AC-KIT2-888S

- Realtek ALC888S HD Audio peripheral card
- Line out & Mac in

## iUA-CM6533

- IEI USB to Audio Card
- C-MEDIA CM6533 Audio
- Line out & Mac in

## iUCOM-2D/4D/4R

- IEI USB to UART Card
- MCH CH34x IC
- 2/4 Port DB9 or RJ45 RS232/422/485

## iUDP-HDM-2P

- IEI USB to HDMI Card
- Audio peripheral card
- Line out & Mac in

## iUCAN-2P

- USB to CAN Module

USB

M.2

## iM2-DLAN/DLAN2

- M.2 PCIE LAN Card
- Dual INTEL 2.5 GbE LAN
- M.2 B+M-key 3042
- M.2 B+M-key 2280(2)

## iM2-UART-4P

- M.2 PCIE UART Card
- MCH CH344 IC
- 4x RS232/422/485(DB9)

## iM2-CAN

- M.2 CAN Card
- 2 Port

## IPCIE-GPIO-8I8O

- PCIE UART Card
- 8in/8out GPIO
- 5V/12V/24V

## IPCIE-CAN

- PCIE CAN Card
- 2 Port

## IPCIE-UART-2D2P

- PCIE UART Card
- 4x RS232/422/485
- up to 1.5M

## IPCIE-UART-4D

- PCIE Adapt Card
- 4x RS422/485
- 2.5K isolatio
- up to 1.5M

## PCle-USB4-2P

- PCIE Adapt Card
- PCIE to 2 USB4 ports
- Up to 40 Gbps

## IPCIE-UART-8D

- PCIE UART Card
- 8 x RS232/422/485
- up to 1.5M

PCle

2025

Q2'26



# Embedded BOX system

# Rugged Embedded System



## TANK Series

MP

Developing

Planning

### TANK-630-EHL



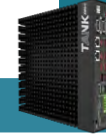
- Intel® Celeron® J6412
- 2x DDR4 SO-DIMM
- 3x 2.5GbE LAN
- 2x RS-232/422/485
- 6x RS-232
- 6x USB
- M.2: 1x A-key, 1x B key, 1xM-key

### TANK-XM811



- Intel® Core 12/13/14<sup>th</sup> Gen processor (35W/65W)
- 2x DDR4 SO-DIMM
- 2x RS-232/422/485, 4x RS-232
- 8x USB
- Flexible expansion: 3-slot~ 6-slot Dual GPU expansion

### TANK-XM813



- Intel® Core™ Ultra 5/7/9 Processors (Series 2) (35W/65W)
- 2x DDR5 SO-DIMM
- 2x RS-232/422/485, 4x RS-232
- 7x USB
- TPM module (Optional)
- Two 2.5 storage (RAID 0/1)
- Flexible expansion: 3-slot~ 6-slot Dual GPU expansion

### TANK-XM811-D5



- Intel® 12-14<sup>th</sup> & Core™ Processors (Series 2)
- Support 35w/65w CPU
- 2x DDR5 SO-DIMM
- Easy disassembly
- Multi-expansion
- Two 2.5 storage (RAID 0/1)

### TANK-8700-MPHX



- AMD Ryzen™ 7000/8000 Series Mobile Processors (45W)
- 2x DDR5 SO-DIMM
- HDMI & DP & USB4 (Display+USB3.2)
- 3-Slot Expansion
- Support IRIS2 (IPMI Module)

### TANK-XM812



- AMD Ryzen™ 7000/8000 AM5 processor (65W)
- 2x DDR5 SO-DIMM
- 2x USB4(Display+USB3.2)
- 2x RS-232/422/485, 4x RS-232
- 6x USB
- Line in/Mic out
- Flexible expansion: 3-slot~ 6-slot Dual GPU expansion

2025

Q3'26

# TANK Series Accessories



MP

Developing

Planning

## TANK-XM81 Expansion Backplane Series

### TXCBP-XM81-2A



- 2 Slot Backplane
- 1x PCIe Gen4 x16 & 1x PCIe Gen3 x4
- System Fan
- Support TXC-XM81-3S

### TXCBP-XM81-2B



- 2 Slot Backplane
- 2x PCIe Gen4 x16(x8 Signal)
- System Fan
- Support TXC-XM81-3S

### TXCBP-XM81-4A



- 4 Slot Backplane
- 1x PCIe Gen4 x16 & 2x PCIe Gen3 x4 & 1x PCIe Gen3 x1
- System Fan
- Support Power Board
- Support TXC-XM81-4S & TXC-XM81-G1

### TXCBP-XM81-4A-A



- 4 Slot Backplane
- 1x PCIe Gen4 x16(x8 Signal) & 1x PCIe Gen3 x4 & 1x PCIe Gen3 x1
- System Fan
- Support Power Board
- Support TXC-XM81-4S & TXC-XM81-G1
- Support TANK-XM812

### TXCBP-XM81-4B



- 4 Slot Backplane
- 2x PCIe Gen4 x16(x8 Signal) & PCIe Gen3 x4
- System Fan
- Support Power Board
- Support TXC-XM81-4S & TXC-XM81-G1

### TXCBP-XM81-4C



- 4 Slot Backplane
- 1x PCIe Gen4 x16 & 1x PCIe Gen3 x4 & 2x PCI
- System Fan
- Support TXC-XM81-4S

### TXCBP-XM81-G2



- 4 Slot Backplane
- 2x PCIe Gen4 x16(x8 Signal) & PCIe Gen3 x4
- System Fan
- Support Power Board

# TANK Series Accessories



MP

Developing

Planning

## TANK-XM81 Expansion Chassis Series



### TXC-XM81-3S

- 3-slot half-size chassis
- One 5cm cooling fan
- Maximum 75W for add-on card power



### TXC-XM81-4S

- 4-slot half-size chassis
- One 8cm cooling fan
- Maximum 75W for add-on card power
- Support IEI expansion power board, providing up to 380W power to GPU cards



### TXC-XM81-G1

- 4-slot full-size chassis
- One 8cm cooling fan
- Maximum 75W for add-on card power
- Support IEI expansion power board, providing up to 380W power to GPU cards



### TXC-XM81-G2

- 6-slot full-size chassis
- One 8cm cooling fan
- Maximum 75W for add-on card power
- Support IEI expansion power board, providing up to 380W power to GPU cards

# TANK Series Accessories



MP

Developing

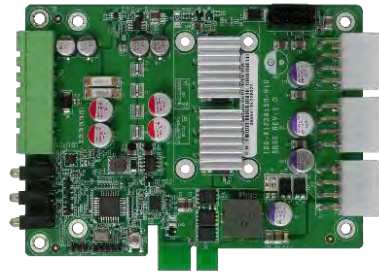
Planning

## TANK-XM81 Series products exclusive accessories



### SF-TANK-XM81

- Expansion fan module
- 3800 RPM
- 35.77 CFM



### IDD-X1228150

- 150W (16-28V) /380W (12V ONLY) output
- 12V&16-28V input
- Up to 95% efficiency



### TXIOB-XM81-A

- Full-Size PCIe Mini
- M.2 A-key 2230
- M.2 B-key
- 2x 3042/52/80 with SIM Slot



### GPOE-XM81-8P

- 8/6x Intel® I226-V controller
- IEEE 802.3at with 30W / 52V per port (Total power 60W)
- TXIOB-XM81-8(6)P2(without POE)



### SF-TANK-87-00

- Expansion fan module
- 3800 RPM
- 35.77 CFM

# TANK-8700-MPHX



MP

High-Performance Fanless Embedded system  
Support AMD Ryzen™ 7000/8000 Series Mobile  
Processors



## Embedded system

- AMD Ryzen™ 7000/8000 Series Mobile up to 45W
- 2x DDR5-5200 SO-DIMM, up to 96GB
- HDMI + DP + USB4 with DP Alt Mode and USB 3.2 Gen 2x2
- 2x 2.5GbE
- 3-slot PCIe/PCI expansion: x8 + x4 + x1 or PCI
- IRIS2 support,
- CE/FCC compliant
- Applications: industrial vision, edge AI, automation, robotics, multi-I/O gateway



# TANK-XM813



MP

High-Performance Fanless Embedded system  
Support Intel® Core™ Ultra Processors (Series 2)



## Embedded system

- Power by Intel® Core™ Ultra Processors (Series 2) (Arrow Lake S), up to 65W
- 2x 2.5GbE
- 2x DDR5-5600 SO-DIMM, up to 96GB
- USB4 with Display support and USB 3.2 Gen 2x2
- 2x 2.5" drive bays with RAID 0/1
- Multiple USB and serial ports
- Flexible I/O expansion boards with optional backplanes and chassis
- Applications: industrial edge server, machine vision/AOI host, robotics/AMR controller, factory gateway, test & measurement platform



# Din-Rail BOX PC



## DRPC Series

MP    Developing    Planning

### DRPC-242-ADL-P



- Intel 13<sup>th</sup> ULT CPUs
- 2x DDR4 SO-DIMM
- 3x 2.5GbE LAN
- 2x RS-232 & 2x RS422/485 with isolation
- 6x USB
- M.2: A-key, B-key, M-key
- Expansion: PCIe Gen3 x4

### DRPC-140-EHL



- Intel® Celeron® J6412
- 1x DDR4 SO-DIMM
- 2x 2.5GbE LAN
- 4x RS232/422/485
- 2x CAN with isolation
- Compact size design
- 12-24V DC

### DRPC-243-MTL



- Intel® Core™ Ultra Processors (Series 1) (Meteor Lake)
- 2x DDR5 SO-DIMM
- 3 x 2.5GbE LAN
- USB4 (Display+USB3.2)
- RS-232&RS422/485 with isolation

### DRPC-242-RPLH



- Intel® Core™ processors (Series 1)(Raptor Lake U/H Refresh)
- 2x DDR5 SO-DIMM
- 3x 2.5GbE LAN
- Independent dual display
- RS-232&RS422/485 with isolation
- Audio

### DRPC-124-EHL



- Intel® Celeron® J6412
- LPDDR4 on board 8GB
- 4x LAN
- 1x RS232 (optional)
- 35mm thickness

### DRPC-W-ASL



- Intel® Atom™ x7433RE/x7835RE processor
- 1x DDR5 SO-DIMM
- Fanless
- 12-28V DC
- -40°C ~ 70°C
- Compact size design

### DRPC-150-TWL



- Intel® Twin Lake N97/N150
- 1x DDR5 SO-DIMM
- 2x 2.5GbE LAN
- 4 x RS232/422/485
- 2 x CAN with isolation
- Compact size design
- 12-24V DC

2025

Q2, 2026



# DRPC Series Accessories



MP

Developing

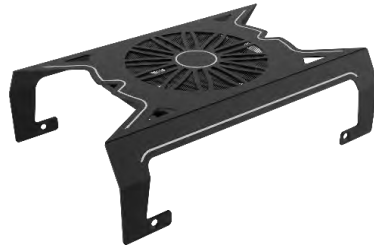
Planning

## DRPC Series products exclusive accessories



### SF-DRPC-24

- External fan
- Support DRPC-240 & DRPC-242



### SF-DRPC-W

- External
- SF-DRPC-W-15 Support 15W Solution
- SF-DRPC-W Support 10W Solution



### TXC-DRPC-240-1S

- DRPC-24x Series 1 Slot Expansion Chassis
- 1x PCIe Gen3 x4
- One 4cm cooling fan
- Maximum 25W for add-on card power
- Support DRPC-240 & DRPC-242



### GPOE-DRPC-240

- PoE Power Module
- Only Support DRPC-240

2023

# DRPC-243-MTL



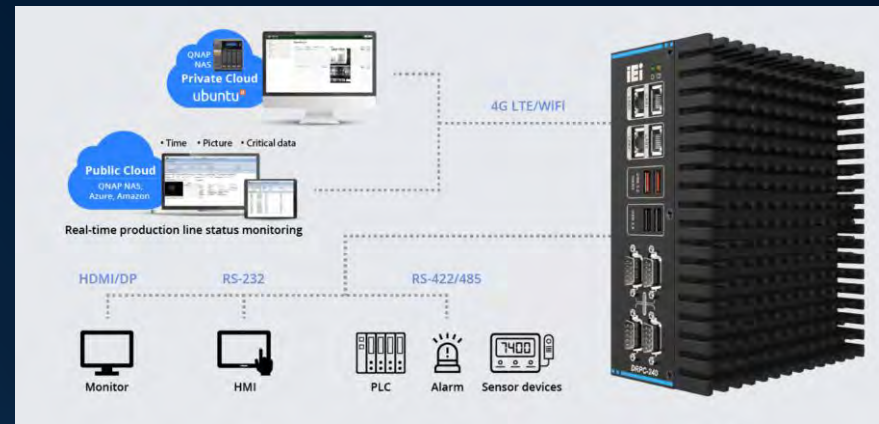
MP soon

## High-Performance Fanless Embedded System Intel® Core™ Ultra Processors (Series 1)



## Fanless DIN-Rail Embedded System

- Intel® Core™ Ultra Processors (Series 1) (Meteor Lake)
- 2x DDR5 SO-DIMM, 16GB installed, up to 96GB
- 3x 2.5GbE
- Serial: 2x RS-232, 2x RS-422/485 with 2.5kV isolation; optional 2x RS-232
- USB: 4x USB 3.2 Gen2 + 2x USB 2.0 + 1x USB4 with Display support
- Audio: Mic-in + Line-out
- Applications: factory gateway, machine vision/edge AI host, serial device integration, automation controller, test & measurement



# DRPC-242-RPLH



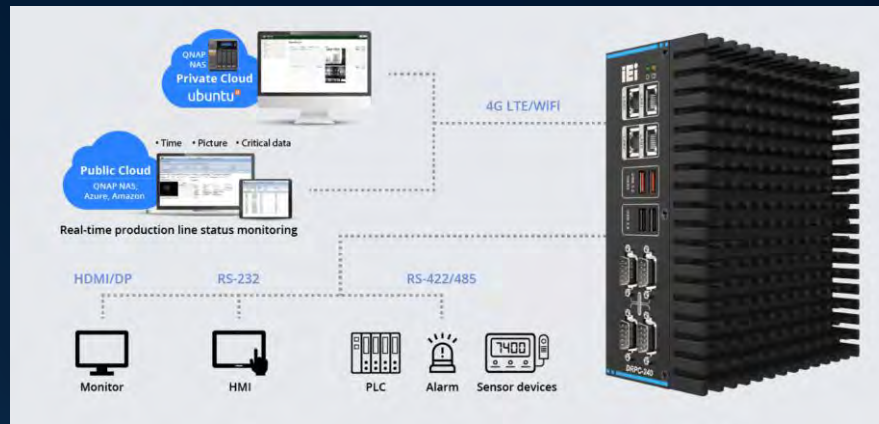
Developing

High-Performance Fanless Embedded System 12th / 13th Generation Intel® Core™ Processor



## Fanless DIN-Rail Embedded System

- Intel® Core™ Processors (Series 1) (Raptor Lake U Refresh)
- 2x DDR5-5600 SO-DIMM, 16GB installed, up to 96GB
- 3x 2.5GbE
- Serial: 2x RS-232, 2x RS-422/485 with 2.5kV isolation; optional 2x RS-232
- USB: 2x USB 3.2 Gen2 + 4x USB 2.0
- Audio: Mic-in + Line-out
- Applications: industrial gateway, serial device integration, factory data acquisition, automation controller, edge networking node



# Mini BOX PC



MP

Developing

Planning

## TANGO / uIBX Series

### TANGO-3010



- Intel® Celeron™ J6412
- LPDDR4x on board 8GB
- 4x USB
- 2x HDMI 1.4b up to 4k
- 3x 2.5GbE LAN
- 1x RS-232 & 1x RS-232/422/485
- 0°C ~ 40°C

### uIBX-260-EHL



- Intel® Celeron® J6412
- LPDDR4x on board 8GB
- 1x HDMI
- 4x USB 3.2
- 2x 2.5GbE LAN
- 1x RS232/422/485
- Optional RS232 & USB

### uIBX-271-TWL



- Intel® Twin Lake platform
- DDR5-4800 SO-DIMM, up to 32GB
- 2x HDMI + DP
- 2x USB 3.2
- 2x USB 2.0
- 2x 2.5GbE Ethernet
- 1x MIC & Line-out

2024

Q4'26

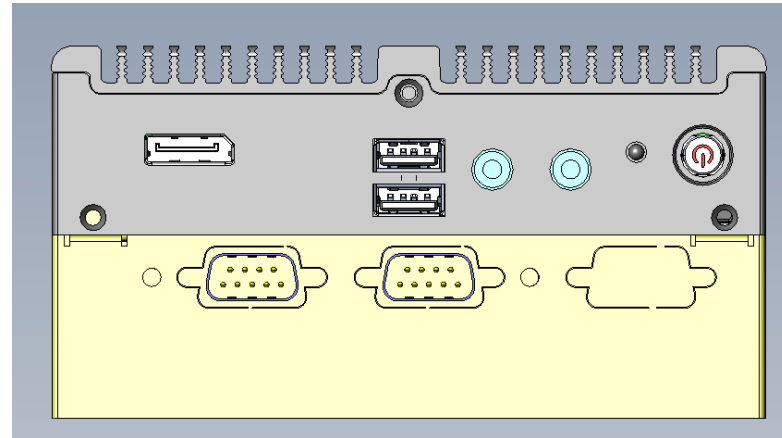
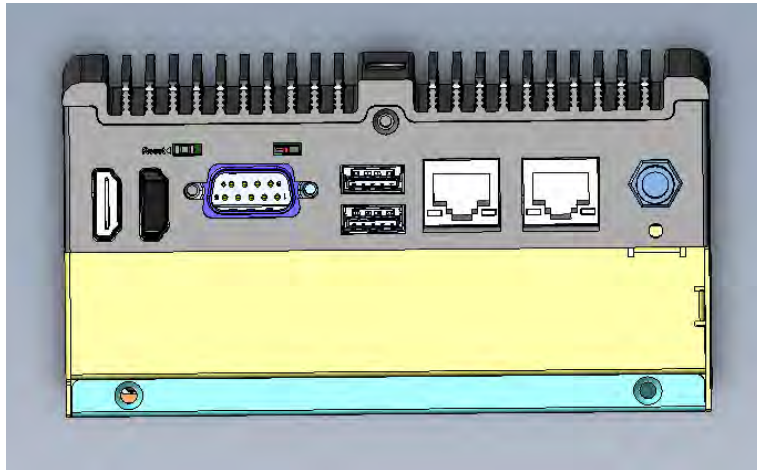


# uIBX-271-TWL



Developing

## Ultra Compact Size Fanless system



## Ultra Compact Embedded System

- Ultra-compact embedded system, fanless design
- Intel® Twin Lake platform
- 2x 2.5GbE
- Display: 2x HDMI + 1x DP
- USB: 2x USB 3.2 Gen2 + 2x USB 2.0
- Serial: 1x RS-232/422/485; optional 1x RS-232/422/485
- Audio: Mic-in + Line-out
- Power: 12V DC input
- Dimensions: single layer 137 x 102.8 x 36.2 mm; dual layer 137 x 102.8 x 56.2 mm
- Applications: compact edge gateway, digital signage controller, industrial HMI/SCADA node, light machine vision controller, mini network appliance



# IP69K-rated Stainless Steel BOX PC



## SWBOX Series

MP

Developing

Planning



### SWBOX series

- Intel® Amston Lake (x7433RE / x74835RE)
- fanless design
- 304 stainless-steel chassis
- M12 connector I/O for rugged field wiring
- Optional 1GbE fiber LAN
- COM & CAN with 2kV isolation
- Full-body IP69K protection
- 10–28V DC wide-range input
- Operating temperature: -40°C to 60°C

Q1'26

# SWBOX-ASL



MP soon

## Stainless Waterproof Computer



## IP69K-rated Stainless Steel Industrial Computer

- Intel® Amston Lake Atom® x7433RE / x7835RE
- 1x DDR5 SO-DIMM 8GB pre-installed, up to 16GB
- M12 I/O: 2x 2.5GbE, 2x RS-232/422/485, 2x CAN, GPIO, USB
- Power: 10–28V DC input via M12
- Full-body IP69K rugged protection
- 2x waterproof HDMI connectors
- 1G fiber optic card
- Operating temperature: -40°C to 60°C
- Applications: vehicle gateway, factory-floor edge node, smart transportation/roadside cabinet, robotics/AGV controller, harsh-environment machine connectivity





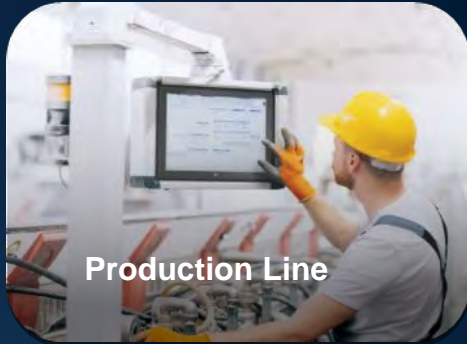
# PANEL PC

# Panel PC Edge Computing Solution



Tailored Experience for Every Location

## Factory



## Transportation



 IEI Remote Management (iRM)

AI Solution

**AFL4**

**Light Industry  
(IP64)**

**PPC2 / AURA**

**Industry  
(IP65)**

**Shield**

**Heavy Industry  
(IP69K / Full IP66)**

**UPC**

DM2 (Monitor) / Embedded Systems



# Light Industry Panel PC



## AFOLUX Series

MP

Developing

Planning

### AFL4-EHL



- (4:3) 12"
- (16:9) 7" /8" /10.1" /12.1" /13.3" /15.6"
- Intel® Celeron® J6412
- LPDDR4x 8G, up to 16GB
- WIFI 6E & Bluetooth 5.2
- Front IP64
- VESA Mount

### AFL4-ADLP



- (4:3) 12"
- (16:9) 10.1"/12.1"/13.3"
- 13<sup>th</sup> Intel® Raptor Lake-P
- LPDDR4x 8G, up to 32GB
- WIFI 6E & Bluetooth 5.2
- Front IP64
- VESA Mount

### AFL4-TWL



- (4:3) 12"
- (16:9) /10.1" /12.1" /13.3" /15.6"
- Intel® Twin Lake platform
- LPDDR5 8G, up to 16GB
- Aluminum die casting housing
- Front IP64
- VESA Mount

### AFL4-RPLH



- (4:3) 12"
- (16:9) 10.1"/12.1"/13.3"
- Intel® Core™ processors (Series 1)(Raptor Lake U/H Refresh)
- LPDDR5 8G, up to 32GB
- Front IP64
- VESA Mount

2024

Q3'26

Q4'26

# AFL4-TWL Series



Developing

## Panel PC



- Size 101" / 121" / W121" / 133" / 156 "
- Intel® Processor N-series, Intel Atom® Processor (Twin Lake)
- 8G LPDDR5 Onboard
- New Heat Dissipation Design
- 2x 2.5GbE ethernet
- 12V DC Input
- M.2 M-key (2280) & M.2 E-key(2230) & M.2 B-key (2242)
- -20 ~ 60°C (SKU)



# Industry Panel PC



MP

Developing

Planning

## AURA Series



### AURA RK Series

- (16:9) 10.1" / 12.1" / 13.3" / 15.6" / 18.5" / 21.5" / 23.8"
- Flat-panel, narrow-bezel design with front hot keys
- Front speakers and built-in camera option for AI facial recognition
- [Rockchip RK3576](#) octa-core with 6 TOPS NPU
- [LPDDR5](#) 8GB, up to 16GB
- 64GB eMMC
- I/O: 1x USB Type-C + 4x USB + 2x RJ45
- 10–28V DC input
- Android and Linux support
- IP65-rated front panel
- Panel / VESA mount support
- -10 °C to 60°C

Q1'26



### AURA MTL Series

- (4:3) 15" / 17" / 19"
- (16:9) 12.1" / 13.3" / 15.6" / 18.5" / 21.5" / 23.8" / 27" / 31.5"
- Flat-panel, narrow-bezel design with front hotkeys
- Front speakers and built-in camera option for AI facial recognition
- [Intel® Core™ Ultra processors \(Series 1\)](#)
- [2x DDR5-5600 SO-DIMM](#), up to 96GB
- Optional onboard NVMe storage
- 10–28V DC input
- IP65-rated front panel
- Panel / VESA mount support
- -10 °C to 60°C

Q2'26



### AURA-W07-TWL

- 7"
- [Intel® Twin Lake platform](#)
- [Onboard LPDDR5 8GB](#), up to 16GB
- 2x 2.5GbE Ethernet
- 1x RS-232/422/485
- 2x USB
- IP65-rated front panel
- Panel mount / VESA mount support
- -10 °C to 60°C

Q4'26



# AURA MTL Series



Developing

Support Panel Mount / VESA Mount



## Industrial Panel PC

- 12.1" / 13.3" / 15" / 15.6" / 17" / 18.5" / 19" / 21.5" / 23.8" / 27" / 31.5" size options
- Intel® Core™ Ultra processors (Series 1) (Meteor Lake)
- 2x DDR5-5600 SO-DIMM up to 96GB
- Fanless design with IP65-rated front panel
- Front hotkeys: power, brightness +/-, volume +/-
- Front camera and speaker
- 12–28V DC input via terminal block
- Optional Wi-Fi/Bluetooth or 4G/5G connectivity
- Applications: factory HMI/SCADA, edge AI operator panel, smart retail/kiosk terminal, access control and monitoring station



# Industry Panel PC



MP

Developing

Planning

## PPC2 Entry Series– Elkhart Lake & Twin Lake



### PPC2-EHL

- (4:3) 8" / 10.4" / 12.1" / 15" / 17" / 19"
- (16:9) 13.3" / 15.6" / 18.5" / 21.5"
- (8:3) 12.3"
- Intel® Elkhart Lake platform
- Onboard LPDDR4x 8GB, up to 16GB
- IP65-rated front panel
- Panel mount / VESA mount support
- -10°C to 60 °C



### PPC2-TWL

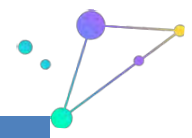
- (4:3) 12.1" / 15" / 17"
- (16:9) 15.6" / 18.5" / 21.5"
- Intel® Twin Lake platform
- DDR5-4800 SO-DIMM, up to 32GB
- 2x 2.5GbE Ethernet
- 2x RS-232/422/485
- 6x USB
- IP65-rated front panel
- Panel mount / VESA mount support
- -10 °C to 60°C

2024

Q3'26



# Industry Panel PC



## PPC2 Performance Series – Intel Core 13<sup>th</sup> & Raptor Lake



### PPC2-ADLP

- (4:3) 10.4" / 12.1" / 15" / 17" / 19"
- (16:9) 13.3" / 15.6" / 18.5" / 21.5"
- 13<sup>th</sup> Intel® Core™ processors mobile platform
- LPDDR4x 8G, up to 32GB
- IP65-rated front panel
- Panel mount / VESA mount support
- -10°C to 60 °C



### PPC2-ADLP(A)

- (16:9) 15.6" / 18.5" / 21.5"
- 13<sup>th</sup> Intel® Core™ processors mobile platform
- 2x DDR4-3200 SO-DIMM, up to 64GB
- IRIS2 (IPMI module) support
- IP65-rated front panel
- Panel mount / VESA mount support
- -10°C to 60 °C



### PPC2-RPLH

- (4:3) 10.4" / 12.1" / 15"
- Intel® Core™ processors (Series 1)(Raptor Lake U/H Refresh)
- LPDDR5 8G, up to 32GB
- IP65-rated front panel
- Panel mount / VESA mount support
- -10°C to 60 °C



### PPC2-RPLH

- (5:4) 17"
- (16:9) 15.6" / 18.5" / 21.5"
- Intel® Core™ processors (Series 1)(Raptor Lake U/H Refresh)
- 2x DDR5-5600 SO-DIMM, up to 96GB
- IRIS2 (IPMI module) support
- IP65-rated front panel
- Panel mount / VESA mount support
- -10°C to 60 °C



### PPC2-ADL-S

- (4:3) 15" / 17" / 19"
- (16:9) 15.6" / 18.5" / 21.5"
- 12<sup>th</sup> Intel® Core™ Processor, up to 65W
- 2x DDR4-3200 SO-DIMM, up to 64GB
- PCIe Gen4 x16 slot
- IP65-rated front panel
- Panel mount / VESA mount support
- -10°C to 60 °C



2024

Q2'26

Q4'26



# PPC2-RPLH Series



Developing

## Support Panel Mount / VESA Mount



## Industrial Panel PC

- (16:9) 15.6" / 18.5" / 21.5"
- (5:4) 17"
- Intel® Core™ processors (Series 1)(Raptor Lake U/H Refresh)
- 2x DDR5 SO-DIMM
- Front Panel IP65
- Multi-Touch PCAP, Work with Gloves and Water
- Anti-Glare & Anti-UV Touch Screen
- 2x M.2 M-key (2280) & M.2 E-key(2230) & 1x M.2 B-key
- Support IEI IPMI module
- -20°C ~ 60°C (By SKU)



# Heavy Industry Panel PC



MP

Developing

Planning

## UPC / SHIELD Series



### UPC-F12M1-RPL

- **(4:3) 12.1"**
- 13th Intel® Core™ i3-1315URE processors
- 8GB LPDDR4x on board
- M12 connector I/O
- Optional Wi-Fi 6E + BT 5.2 & RFID
- CAN bus support
- Full-body IP66
- VESA mount support
- Power: 9 ~ 36V DC-in terminal block support ACC mode
- -20°C ~ 60°C



### SHIELD-ASL

- **(16:9) 15.6" / 18.5" / 21.5"**
- Intel® Atom® x7000RE Series (Amston Lake)
- 304 stainless-steel chassis
- Anti-glare & anti-UV PCAP touch
- 10–28V DC input
- COM port & CAN bus with 2.0kV isolation
- Full-body IP69K
- Optional 1GbE fiber LAN up to 40 km
- Supports yoke mount and VESA mount
- -30°C to 55°C



### SHIELD-MTL

- **(16:9) 15.6" / 18.5" / 21.5"**
- Intel® Core™ Ultra Processors (Series 1) (Meteor Lake)
- 304 stainless-steel chassis
- Anti-glare & anti-UV PCAP touch
- 10–28V DC input
- COM port & CAN bus with 2.0kV isolation
- Full-body IP69K
- Optional 1GbE fiber LAN up to 40 km
- Supports yoke mount and VESA mount
- -30°C to 55°C

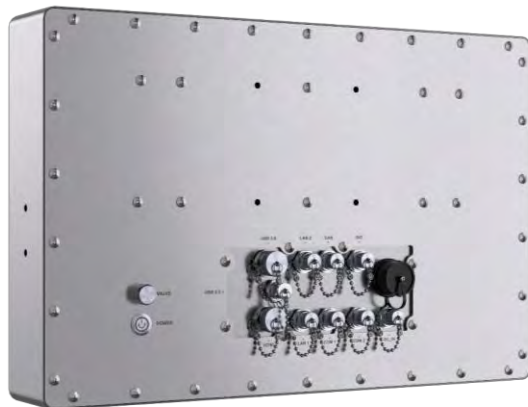
2025

Q1'26

# SHIELD Series



MP



## Stainless Steel PANEL PC

- Platform options: Intel® Atom® x7000RE Series (Amston Lake) or Intel® Core™ Ultra processors (Series 1) (Meteor Lake)
- 15.6" / 18.5" / 21.5" LCD options
- DDR5 SO-DIMM up to 16GB (Amston Lake) / up to 96GB (Meteor Lake)
- 10–28V DC input; COM & CAN with 2.0kV isolation
- Rugged stainless-steel design with efficient heat dissipation
- IP66 full-body with M12 waterproof connectors
- VESA / yoke mount; -30°C to 55°C
- Applications: harsh-environment HMI, transportation/outdoor terminals, remote monitoring panels





# Industrial Monitor

# Industrial Monitor



MP

Developing

Planning

## DM/DM2 Series



### DM-F / DM-FW Series

- (4:3) 8"/12"/15"/17"/19"
- (16:9) 21.5"/23.8"
- Aluminum die casting frame
- Smart OSD



### DM2 Series (4:3)

- 10.4" / 12.1" / 15" / 17" / 19"
- Flat-panel design with narrow bezel
- Front-access OSD keys for quick adjustment
- Front-facing speakers
- Built-in camera option for AI facial recognition
- Lite version available without OSD / camera / speakers / USB hub



### DM2 Series (Wide screen)

- 10.1" / 12.1" / 12.3" / 13.3" / 15.6" / 18.5" / 21.5" / 23.8"
- Flat-panel design with narrow bezel
- Front-access OSD keys for quick adjustment
- Front-facing speaker
- Built-in camera option for AI facial recognition
- Lite version available without OSD / camera / speaker / USB hub



### DM2 Series (2.5K&4K)

- **27" / 31.5"**
- 2.5K and 4K resolution options
- Flat-panel design with narrow bezel
- Front-access OSD keys for quick adjustment
- Front-facing speaker
- Built-in camera option for AI facial recognition
- Lite version available without OSD / camera / speaker / USB hub

2025

Q1'26

# DM2 Series



MP

Panel Mount / VESA Mount



720P Wide Angle Camera

Front Accessible  
OSD Buttons

Front Dual 2W Speakers



## Industrial Monitor

- (4:3) 10.4" / 12.1" / 15" / 17" / 19"
- (16:9) 10.1" / 12.1" / 13.3" / 15.6" / 18.5" / 21.5" / 23.8"
- (8:3) 12.3"
- Flat-panel, narrow-bezel design
- Front-access OSD keys and front speaker
- Multi-touch PCAP, supports glove and wet operation
- Anti-glare & anti-UV touch surface
- Optional high brightness for outdoor/bright environments
- Built-in camera option for AI facial recognition
- Applications: factory HMI/SCADA displays, kiosk & access control terminals, smart retail/wayfinding, transportation/parking systems, outdoor information stations





# Power Module

# Supercapacitor Power Backup Module



MP

Developing

Planning

## RHEA Series



### RHEA-I660

- 6x 600F 3.0V supercapacitors
- Up to 150W backup for 60s at 30°C
- 12V / 19V / 24V DC input/output
- 500,000 cycles, up to 10-year service life
- -40°C to 60°C
- 7-segment status display
- Power management software

### RHEA-E1260

- 12x 600F 3.0V supercapacitors
- Up to 150W backup for 100s at 30°C
- 12V / 19V / 24V DC input/output
- 500,000 cycles, up to 10-year service life
- -40°C to 60°C
- 7-segment status display
- Power management software

### RHEA-I420

- 4x 200F 3.0V supercapacitors
- Up to 60W backup for 20s at 30°C
- 12–28V DC input, 12V output
- 500,000 cycles, up to 10-year service life
- -40°C to 60°C
- Power management software

### RHEA-I512

- 5x 120F 3.0V supercapacitors
- Up to 45W backup for 25s at 30°C
- 12–28V DC input, 12V output
- 500,000 cycles, up to 10-year service life
- -40°C to 60°C
- Power management software

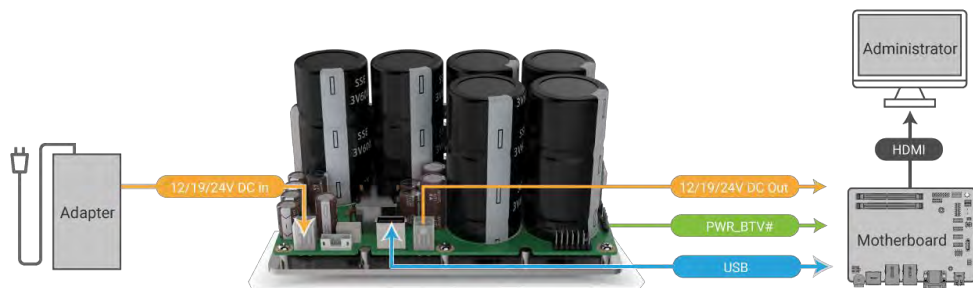
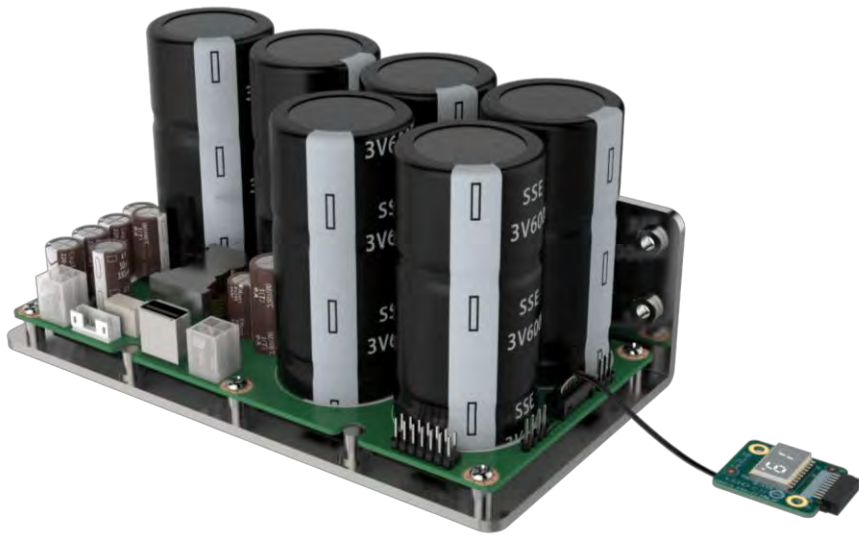
2025



# RHEA Series



## Supercapacitor Power Backup Module



## Supercapacitor Power Backup Module

- 6x supercapacitor cells, 600F 3.0V each
- Backup power: up to 150W for 60s at 25°C
- Supports 12V / 19V / 24V DC input/output
- Long life: 500,000 charge/discharge cycles, up to 10-year service life
- Wide operating temperature: -40°C to 60°C
- 7-segment digital status display for quick health check
- Power management software for monitoring and configuration
- Applications: industrial PC hold-up time, graceful shutdown for edge AI/IPC, preventing data loss for SSD/RAID, AMR/robotics power ride-through, transportation and outdoor cabinets power



# UPS Module



MP

Developing

Planning

## AUPS2 Series



### AUPS2-A20

- 28Wh battery capacity; up to 60+ min runtime, load dependent
- 12–24V DC input
- 50W DC output (4.1A @ 12V)
- Rugged metal enclosure with VESA 75 mount
- Remote DC output on/off for external switch installation
- Low-battery auto shutdown for system protection
- Web-based remote management via network, no software installation required



### AUPS2-B20

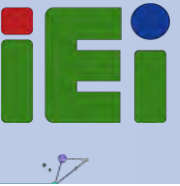
- 56Wh battery capacity; up to 120+ min runtime, load dependent
- 12–24V DC input
- 100W DC output (8.3A @ 12V)
- Rugged metal enclosure with VESA 75/100 mount
- Remote DC output on/off for external switch installation
- Low-battery auto shutdown for system protection
- Web-based remote management via network, no software installation required

2025



# Workstation/ Server Edge AI Solution

# IEI Edge AI Solutions



## Entry / Compact



## General



## Advanced



## Performance



## Find the Right AI Performance for Your Application

~ 100 TOPS



### ENTRY

IoT Environmental monitoring Retail POS AOI

100–300 TOPS



### General

AMR /AGV /Co-robot Rel-time video analysis

300–1000 TOPS



### Advanced

Medical imaging AI E-fence

1000+ TOPS



### Performance

High-density video analysis Edge RAG/SLM/LLM

# GAIA : Rackmount Series



MP

Developing

Planning

## GAIA-5020I

- AMD EPYC SP6
- 4 x M.2 SSD
- Support Single slot FHFL GPU
- 2U Rackmount



## GAIA-504TA

- AMD EPYC SP6
- 4 x M.2 SSD
- **Hot Swap** 2.5" or 3.5" SATA \*8
- Support **Dual slot** FHFL GPU or 2x single slot FHFL GPU
- 4U Tower / Rackmount



## GAIA-5040A

- AMD EPYC SP6
- 4 x M.2 SSD
- 2.5" or 3.5" SATA \*4
- Support **Dual slot** FHFL GPU or 2x single slot FHFL GPU
- 4.5U Rackmount



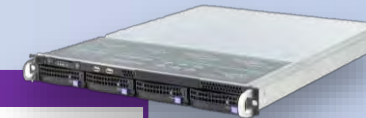
## GAIA-3020I

- Intel 12th/13th/14th Core i9/i7/i5/i3,
- M.2 NVMe SSD & 2.5" or 3.5" SATA\*4
- Support single slot FHFL GPU
- Redundant PSUs
- 2U Rackmount System



## GAIA-3010I

- Intel 12th/13th/14th Core i9/i7/i5/i3,
- M.2 NVMe SSD
- **Hot Swap** 2.5" SATA\*4
- Support single slot FHFL GPU
- Redundant PSUs
- 1U Rackmount System



Q1

Q2

Q3

2026

# GAIA- 3010I



Developing

## 1U Rackmount Edge AI System

1. LGA1700 Intel® 12th/13th/14th Core i9/i7/i5/i3, Pentium and Celeron processor(125W)
2. Chipset Intel® Q670/Q670E
3. Dual-channel DDR5 4400MHz
4. Support Triple Independent Displays, DisplayPort 1.4a, HDMI™ & IDPM module.
5. Dual 2.5GbE LAN
6. Hot-swap 2.5" or 3.5" SATA 6Gb/s HDD/SSD
7. M.2 M key for NVMe storage
8. PCIe Gen4 x16 to support single slot FHFL GPU.
9. Redundant PSUs
10. 1U Rackmount System



IMBA-BTL-Q670



# GAIA- 3020I



Developing



## 2U Rackmount Edge AI System

1. LGA1700 Intel® 12th/13th/14th Core i9/i7/i5/i3, Pentium and Celeron processor(125W)
2. Chipset Intel® R680E
3. Dual-channel DDR5 4400MHz
4. Support Triple Independent Displays, DisplayPort 1.4a, HDMI™ & IDPM module.
5. Dual 2.5GbE LAN
6. M.2 M key for NVMe & 2.5" or 3.5" SATA 6Gb/s storage
7. PCIe Gen4 & Gen5 expansion Slot to support single slot FHFL GPU.
8. Redundant CRPS PSUs
9. 2U Rackmount System

IMBA-R680



# GAIA- 5020A



Developing



## 2U Rackmount Edge AI System

1. AMD EPYC SP6 Siena 8-64 cores
2. 6 x DDR5 4800MHz RDIMM with ECC
3. Support display 1 x DP 1920\*1080
4. 4 x M.2 2242/2280 M Key NVMe SSD
5. 4 x 2.5GbE LAN Ports
6. PCIe Gen4 x16 slot to single slot FHFL GPU
7. 2U Rackmount System

IMBAX-SP6



# GAIA- 504TA



Developing



## 4U Tower / Rackmount Edge AI System

1. AMD EPYC SP6 Siena 8-64 cores
2. 6 x DDR5 4800MHz RDIMM with ECC
3. Support display 1 x DP 1920\*1080
4. 4 x M.2 2242/2280 M Key NVMe SSD
5. Hot-swap 2.5" or 3.5" SATA 6Gb/s HDD/SSD
6. 4 x 2.5GbE LAN Ports
7. 3 x PCIe Gen4 x16 slot. Support 2x single slot FHFL GPU.
8. ATX or or Redundant CRPS PSUs
9. Tower/ 4U System

IMBAX-SP6



# GAIA- 5040A



Developing

## 4.5U Rackmount Edge AI System



1. AMD EPYC SP6 Siena 8-64 cores
2. 6 x DDR5 4800MHz RDIMM with ECC
3. Support display 1 x DP 1920\*1080
4. 4 x M.2 2242/2280 M Key NVMe SSD
5. 2.5" or 3.5" SATA 6Gb/s storage
6. 4 x 2.5GbE LAN Ports
7. 3 x PCIe Gen4 x16 slot. Support Dual slot FHFL GPU (NVIDIA RTX 4090 ) or 2x single slot FHFL GPU
8. 4.5U ATX Rackmount System



IMBAX-SP6





# Thanks

Your Intelligent Edge AI Ally

[www.ieiworld.com](http://www.ieiworld.com)